

ArchDailyProjectsPublic SpaceUnited KingdomSayer Street / Jan Kattein Architects + BD Landscape Arc

Sayer Street / Jan Kattein Architects + BD Landscape Architects



Save this project



Curated by Paula Pintos

PUBLIC SPACE, GALLERY, COMMUNITY - LONDON, UNITED KINGDOM

Architects: BD Landscape Architects, Jan Kattein Architects

Area : 280 m²

Year : 2021

Photographs: Jack Hobhouse

Manufacturers: Palram, Rationel, Dulux AzkoNobel Trade, LAYHER, Ligman, Orbis Schreder

Landscape Architects : BD Landscape Architects

Lighting Design : Michael Grubb Studio

Structural Engineer : Engineers HRW

E/M Engineering : Buro Happold

Planning Consultant : DP9

Contractor : Lendlease construction

MORE SPECS



Recommended Products

RETAIL APPLICATIONS

VELUX Commercial
VELUX Modular
Skylights in...

THERMAL

Firestone Building Pro...
Roof Boards -
RESISTA PIR...

FIBER CEMENTS / CE...

EQUITONE
Fiber Cement Facade
Panel Natura

ENCLOSURES / DOUB...

Cupa Pizarras
Rainscreen Cladding
System CUPACLAD...

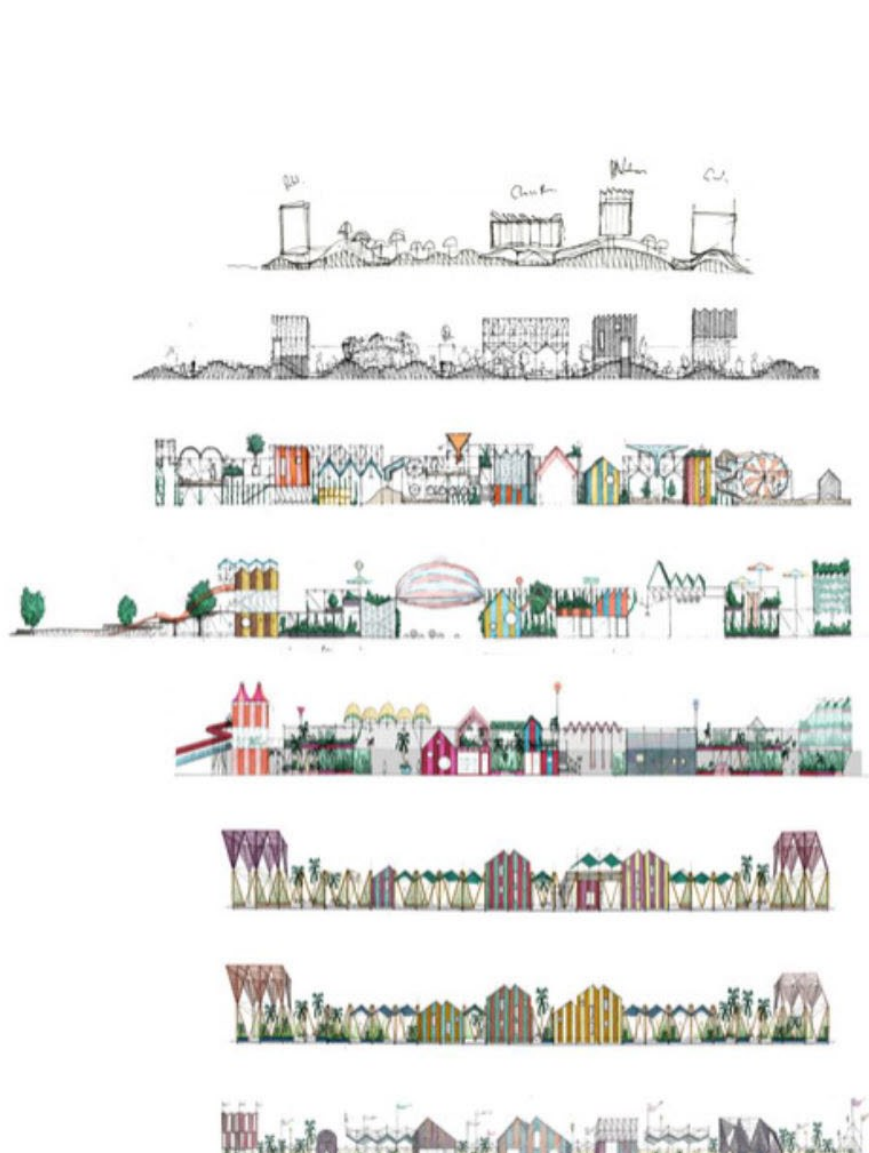
Text description provided by the architects. On a sliver of land just four meters wide, Sayer Street packs in the infrastructure to support all the social life which characterizes London's best-loved high streets. Set against the construction hoarding for mixed-use development within the Elephant Park masterplan, the project complements the recently opened terrace of cafes and restaurants on the south of Sayer Street until the other half of the high street is complete.



The temporary nature of the scheme allows it to test responses to some of the existential questions facing town centers across the country, including how to balance the implications of the emerging experience economy against the continuing need for civic spaces that define a sense of belonging in the city.

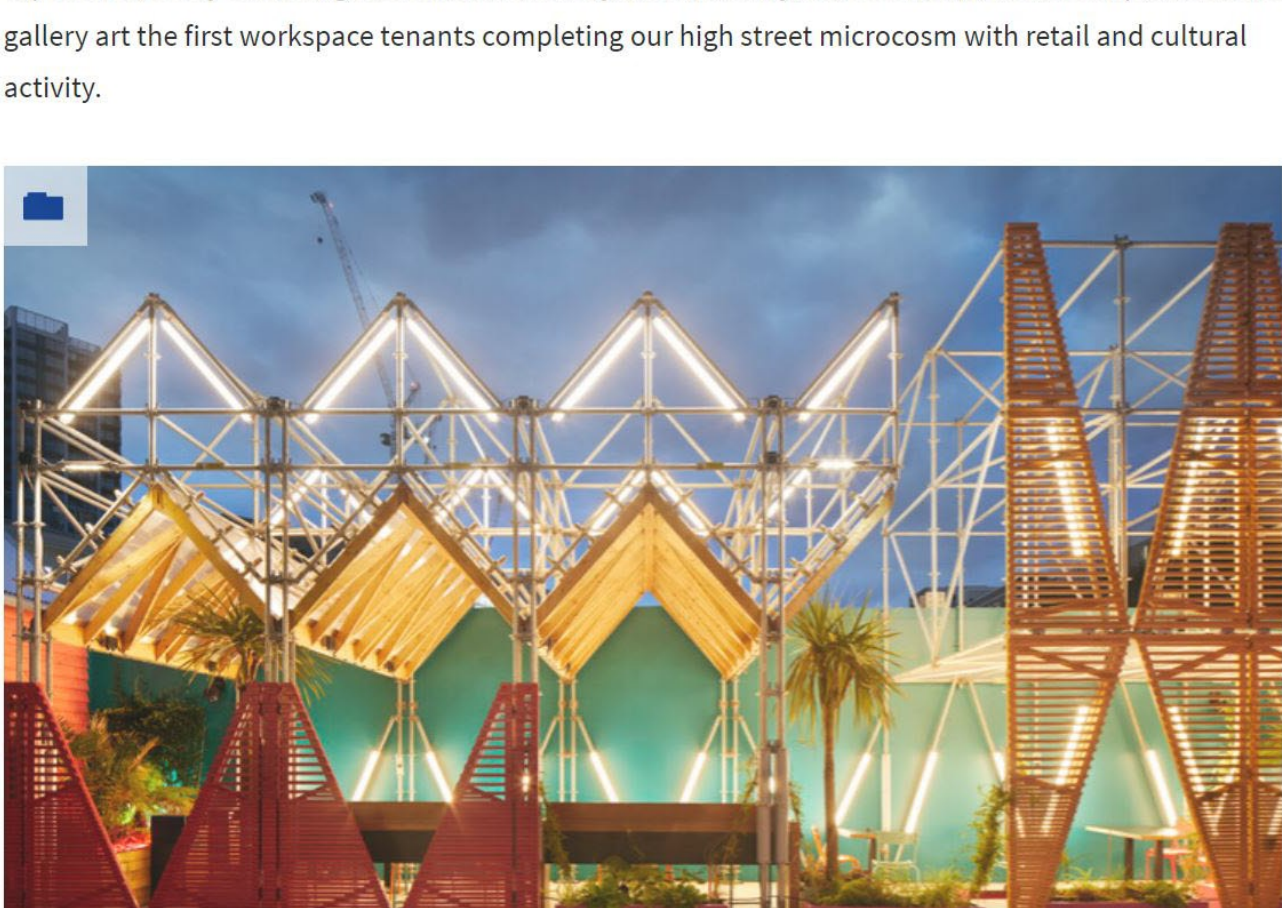


Our response takes the form of a linear folly. Undulating canopies shelter event spaces and seating nooks, interspersed with lush planting and three compact workspace pavilions. The entire assemblage sits within a framework of brightly colored scaffold and lighting that draw the eye ever further down the street.



©

These, for us, are the pleasures of walking in the city: reasons to wander, opportunities to meet, and vantage points for watching life go by. Abundant exotic planting is a central part of the spatial experience, softly enclosing areas within the folly. A community radio station, a flower shop, and an art gallery are the first workspace tenants completing our high street microcosm with retail and cultural activity.

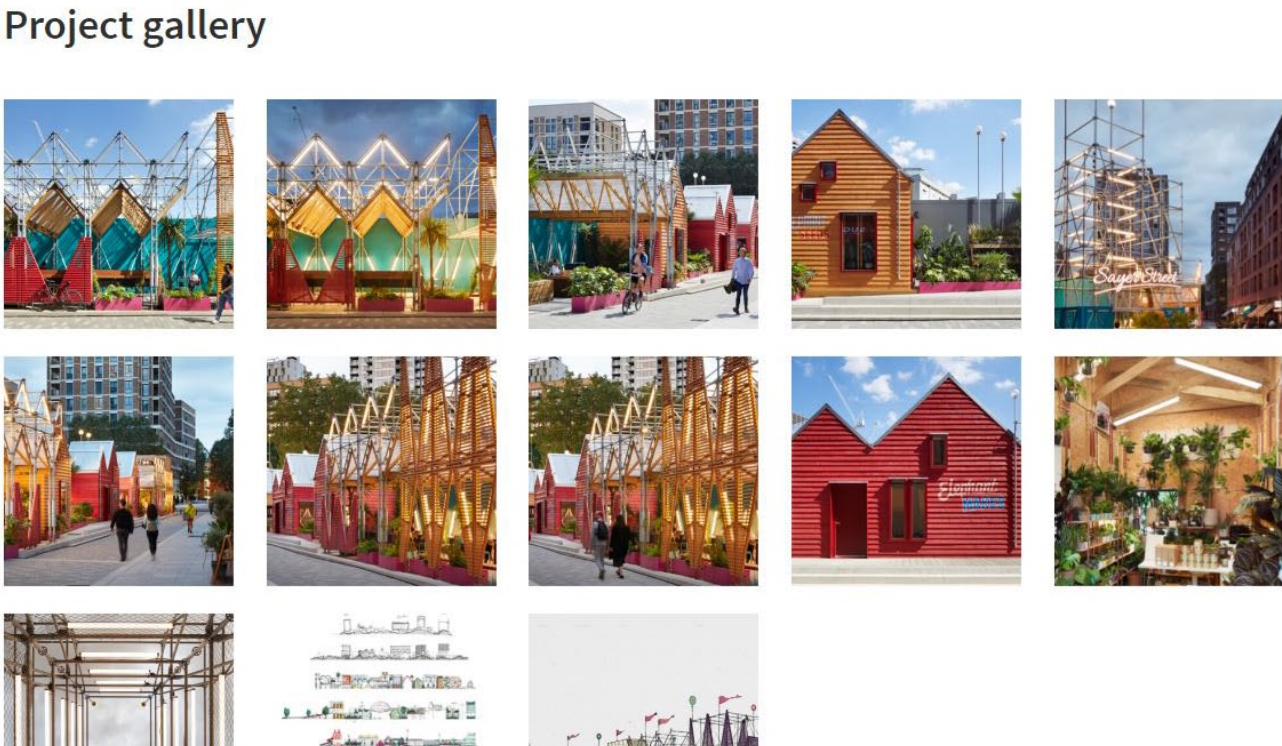


© Jack Hobhouse

Once the development behind is completed in three years' time, the modular scaffold that makes up the superstructure will be struck, and the workspace pavilions, manufactured off-site, will be re-deployed at a school, community space, or elsewhere within the regeneration site.

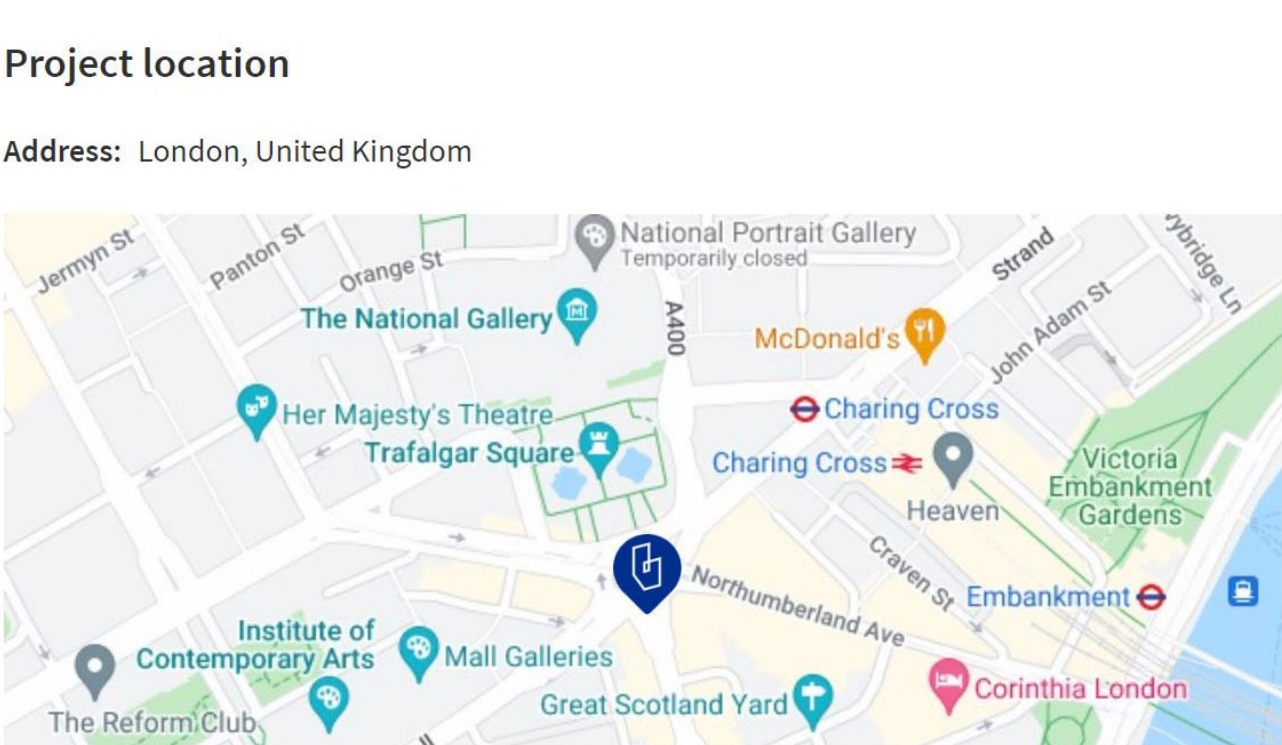


Project gallery



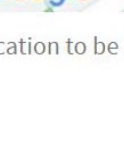
Project location

Address: London, United Kingdom




Location to be used only as a reference. It could indicate city/country but not exact address.

About this office



Jan Kattein Architects
Office



BD Landscape Architects
Office

[FOLLOW](#)

[FOLLOW](#)

PRODUCTS



#TAGS

ProjectsBuilt ProjectsSelected ProjectsUrbanismUrban Design

Public SpaceCultural ArchitectureMuseums & ExhibitGallery

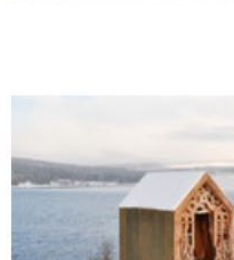
Public ArchitectureCommunityEnglandLondonOn Facebook

United Kingdom

MORE FROM THESE OFFICES

Ebury Edge Community
Center / Jan Kattein
Architects[More from Jan Kattein Architects »](#)

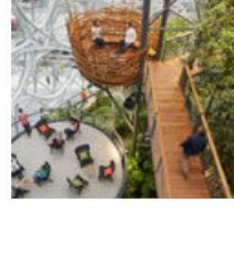
MORE PUBLIC SPACE

Proposed Tourist Hub by
Progress, Miralles Tagliabue
EMBT, and Cushman &
Wakefield Utilizes the Forces
of Nature to Promote a
"Natural City"Freya and Robin / Studio
WeaveTransbay Transit Center in
San Francisco / Pelli Clarke
Pelli Architects[More Public Space »](#)

MOST VISITED

Terracotta House / Modo
Designs

Is Minimalism Dead?

Neuroarchitecture: How Your
Brain Responds to Different
Spaces

PRODUCTS

Roofing Membrane -
FIRESTONE ULTRAPLY™
TPO | Firestone Building
ProductsAnodized Aluminum -
ClearBrite® Specialty
Finishes | Lorin IndustriesTerrazzo in Finger Lakes
Welcome Center | Terrazzo &
Marble